

ST. MARY'S CATHOLIC SCHOOL and CENTER and INTERNATIONAL HOTEL SENIOR HOUSING San Francisco, CA



The design documents for Phase 1 of St. Mary's multi-use complex were completed in mid-2002. MFT has now completed structural design for Phase 3 and construction administration for Phase 1.

The complex includes a five-level school for 400 K-8 students, a gymnasium, a community center, a chapel and a 17-story affordable senior housing complex constructed on a podium over three and a half levels of underground parking.

Due to the high water table, tension piles were designed to keep the building from floating during the early phases of construction.



Cost: \$30M

Services Performed:
Engineer of Record for
Structural Design and CA

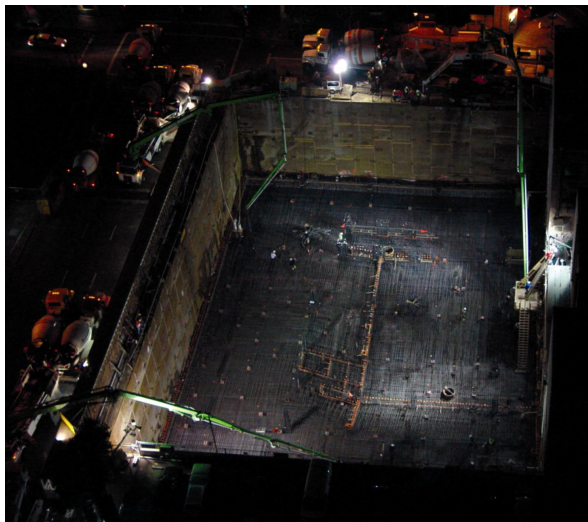
Completion:
Phase 1 – February 2004
Phase 3 – September 2005

Area: 120,000 sf

Client Contact:
The Archdiocese of
San Francisco / HUD
c/o The Marchese Company

Contact:
Mr. Ralph Marchese
The Marchese Company
San Francisco, CA
(415) 567-9872

Mr. Sam Nunes/Ms. Pauline
Souza, AIA
Chong | Partners
Architecture
San Francisco, CA
(415) 433-0120



Night Pour – 3,000 cubic yards of concrete
Photo Courtesy of V. Jacklich, Herrero Contractors, Inc.