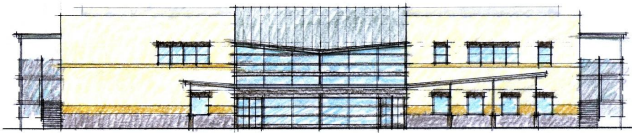
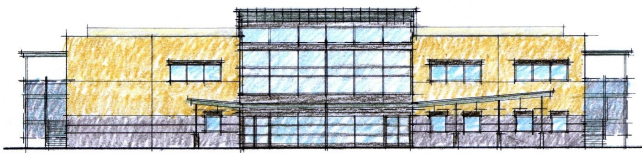


GENENTECH CHILD CARE CENTER

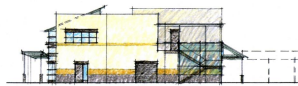
South San Francisco, CA



OPTION 1 - ELEVATION 1 - NORTH



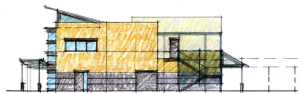
OPTION 2 - ELEVATION 1 - NORTH



OPTION 1 - ELEVATION 3



OPTION 2 - ELEVATION 3



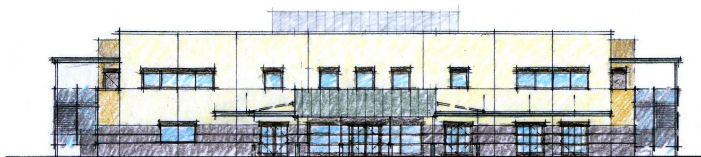
OPTION 1 - ELEVATION 4



OPTION 2 - ELEVATION 4



OPTION 1 - ELEVATION 2



OPTION 2 - ELEVATION 2

MFT is providing structural design services for the new Genentech Administration and Child Care Center building as part of their corporate campus expansion in South San Francisco.

Cost
\$23M

Services Performed
Engineer of Record for Structural and Seismic Design and Construction Administration

Completion
Early 2008 (estimated)

Area
50,894 sf

Client Contact
Genentech, Inc.
c/o Eichleay Engineers, Inc.
of California, Inc.
Suite 600
1390 Willow Pass Road
Concord, CA 94520

Maria Rosales, AIA
Project Architect
Eichleay Engineers of
California, Inc.
925.689.7000